



# ALGEBRA 2 A - 2020

01



Expectations

02



Grading

03



NTI & Hybrid  
Expectations

04

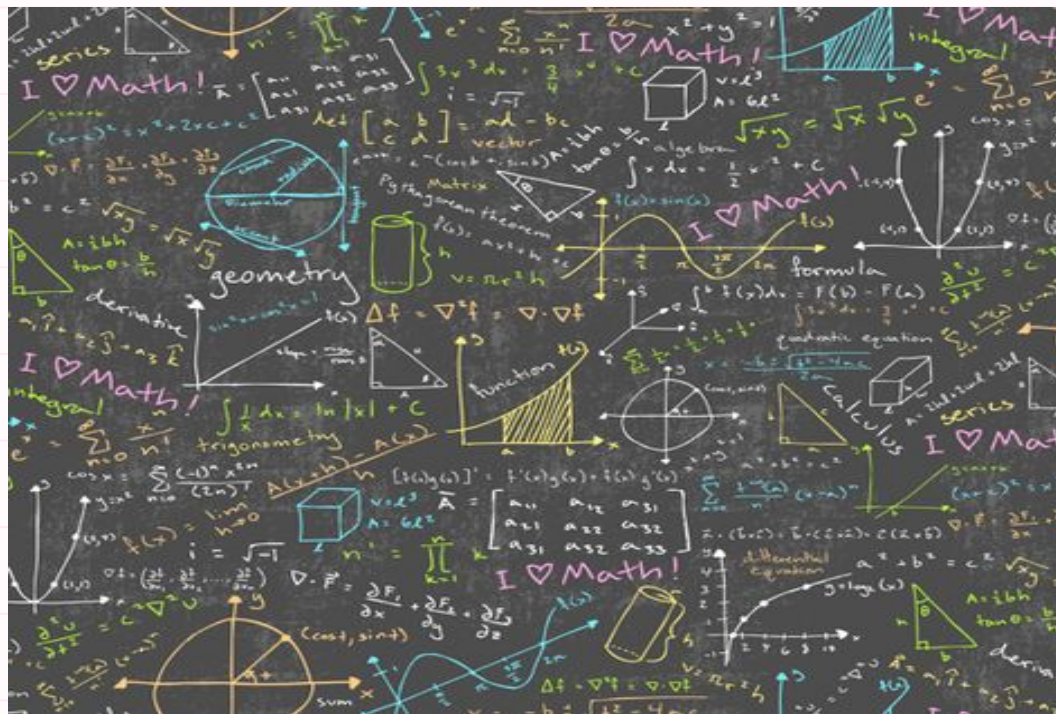


Miscellaneous

# COURSE DESCRIPTION

This is an advanced Algebra course designed for students who have completed Algebra 1, Geometry, and who plan to go to college and/or required to take math their senior year (all of you). This course will focus on solving and graphing functions including linear, absolute value, quadratic, and polynomial. You will learn to solve system of equations, quadratic equations and work with complex numbers. Technology (graphing calculator) will be used to introduce and expand on the areas listed above.

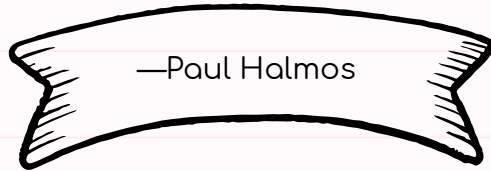
Students taking Algebra 2 should take MAT 150, AP Statistics, or Pre-Calculus next year.





**"THE ONLY WAY TO LEARN  
MATHEMATICS IS TO DO  
MATHEMATICS."**

—Paul Halmos



# WHAT MATERIALS DO I NEED FOR ALGEBRA 2?



- Pencil/Pen
- Paper/Notebook
- Binder/Folder
- Mask
- Chromebook
  - Charged Everyday
- Graphing Calculator
  - Charged Everyday
  - TI - 84 (preferred) or TI-83

Be Prepared for Class everyday!

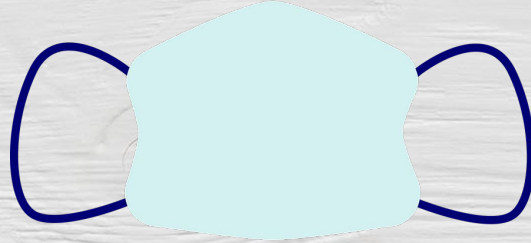
Failing to prepare is preparing to fail.



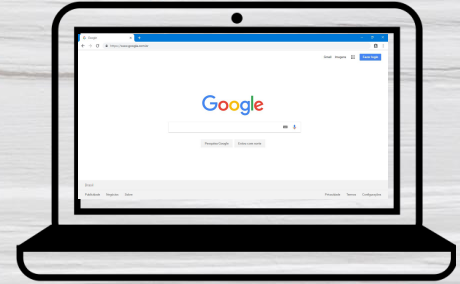
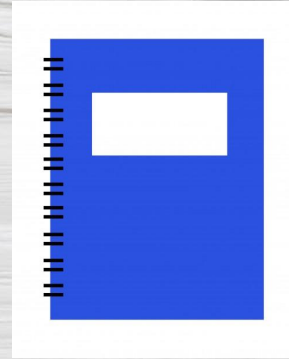
# DON'T FORGET YOUR MATERIALS!



PLEASE WEAR



A MASK



# LEARNING ABOUT CLASS WITH MRS. SMITH



## EXPECTATIONS

Click the title above to go to Behavior & Class Expectations.



## GRADING

Click the title above to go to the grading scale, categories, policies, and integrity



## NTI/HYBRID

Click the title above to go to rules, expectations, schedule, etc for NTI and/or Hybrid Learning



## MISCELLANEOUS

Click the title above to go to electronics policy, hall passes, motivations, encouragements, and extra information



# EXPECTATIONS

## BEHAVIOR EXPECTATIONS

- Be Respectful
- Be Honest
- Use the restroom before class
- Arrive on Time
- Sit In your assigned seat
- Clean up and Sanitize your area before leaving
- Wear a mask when social distancing isn't possible

## CLASSROOM EXPECTATIONS

- Always Show Work
- Turn your work in on time
- Late work is not accepted.
- All information will be posted in google classroom. Check it Daily.
- Bring your materials everyday
- Cell phones should be silenced and put away.

## BEHAVIOR EXPECTATIONS

- Anyone entering the room after the bell rings will be counted as tardy.
- Use hand sanitizer when entering the room.
- It is expected that each student will participate in activities and complete work with academic integrity.



# GRADING SCALE

A 100 - 90  
B 89 - 80  
C 79 - 70  
D 69 - 65  
F 64 - 0

## GRADEBOOK CATEGORIES

60% of Course Grade -  
Assessments (Products)

40% of Course Grade -  
Assignments (Process)

Students will receive a  
grade daily.  
Grades will be posted  
once a week.

## GRADE POSTINGS

[Click Here for More](#)

# GRADING POLICIES/PROCEDURES

## LATE WORK

Late work will not be accepted. Students have three days to turn in absent work.

## TESTS/QUIZZES

Given throughout the course to assess understanding. You will be notified in advance of unit tests.

## ABSENCES

Unexcused absences will result in a zero for the students' daily grade.

## ASSIGNMENTS

Assignments could be activities, worksheets, bookwork, notes, or discussions that need to be completed by the due date.

## CHECKPOINTS

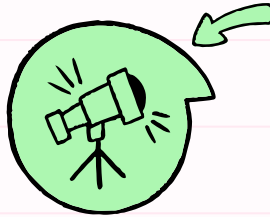
After each standard is taught and practiced, a checkpoint will be given. Checkpoints are an assessment that will be graded for correctness, but recorded in the IC assignment category. Questions on Checkpoints will come from the suggested assignments throughout the topic.

## ASSESSMENTS

Quizzes - will be given every 2-3 standards.  
Tests - given at the completion of a unit. Tests may be a variety of question types, students may be asked to show work to accurately assess misunderstandings.

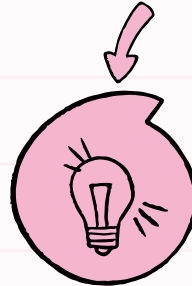
[Click Here for More](#)

# ASSIGNMENT INFORMATION



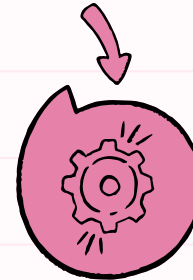
## COMPLETENESS

Assignments will be graded on completeness. Try your best and learn from your mistakes.



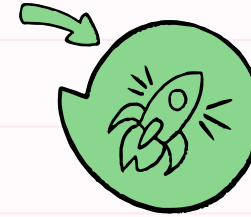
## DUE DATES

It is expected that you turn in assignments by the due date. Late work will result in no credit.



## SUGGESTED ASSIGNMENTS

Most nights a suggested assignment will be given. This assignment is to help learn content. It is not required students complete these assignments. However, checkpoint questions will come from the suggested assignment.



## SHOW WORK

Students are expected to ALWAYS show work.



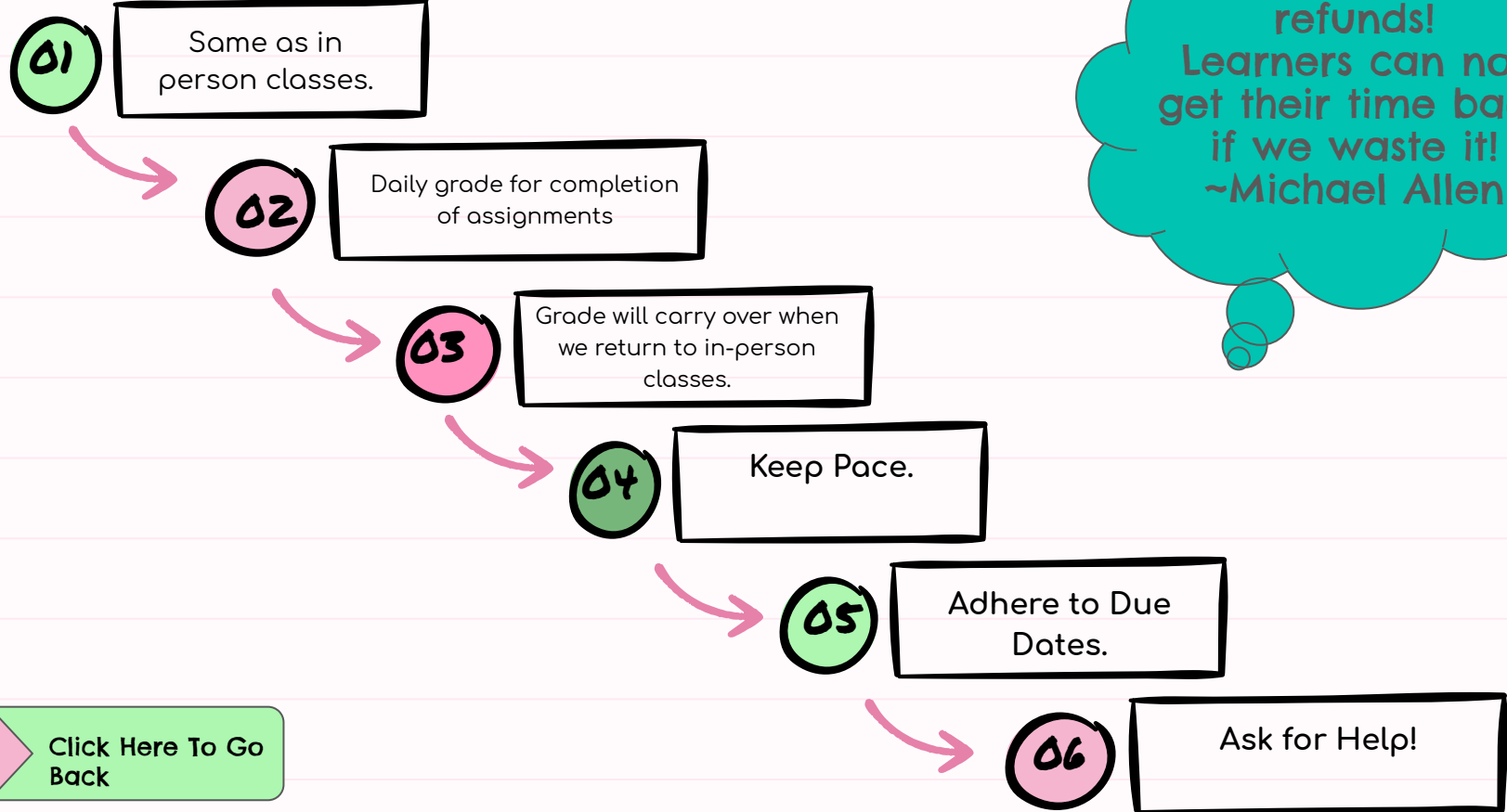
[Click Here To Go Back](#)

ALL STUDENTS ACADEMIC WORK MUST REFLECT THEIR OWN HONEST EFFORT. STUDENTS WHO ARE CAUGHT CHEATING WILL RECEIVE A ZERO FOR THE ASSIGNMENT OR ASSESSMENT. ALSO, ANY STUDENTS WHO COLLABORATE WITH OTHERS BY ALLOWING THEIR WORK TO BE COPIED OR OTHER MEANS ARE SUBJECT TO SAME PENALTY.



Academic Integrity

# NTI + HYBRID EXPECTATIONS



There are no refunds!  
Learners can not get their time back if we waste it!  
~Michael Allen

Click Here To Go Back

# MISCELLANEOUS

DO YOUR PART....			DO YOUR BEST...	
ITEM 1	ITEM 2	ITEM 3	ITEM 4	EXTRA CREDIT
TRY YOUR BEST AND BE PROUD OF YOUR WORK.	ASK FOR HELP	ALWAYS ROOM FOR IMPROVEMENT	RIGHT IS RIGHT EVEN IF NO ONE IS DOING IT..	ANY HALL PASSES + 2 HOMEWORK PASSES
If you didn't do your assignment; admit it and do the next one.	It's best to follow a schedule & complete work when you have assistance from me.	If you didn't study for the test; accept the grade and work harder to improve the next time.	If you refuse to follow the rules; accept the consequences.	Any unused passes can be turned in for extra credit at the end of the semester.

Go To  
Communication

# COMMUNICATION

Go To Resources

## CONTACT MRS. SMITH

- Via e-mail  
[kayla.smith@anderson.kyschools.us](mailto:kayla.smith@anderson.kyschools.us)
- Via Remind101  
Test @misskay2 to 81010
- Via Google  
Classroom Code:  
SS6MZYZ

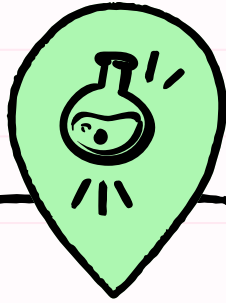
## MRS. SMITH'S WORK DAY

Mrs. Smith's work day is from 8am - 3pm each week day. Please contact within these hours for a quick reply. If you contact her after 3 pm, expect a reply the next school day. If you contact her on the weekend, expect a reply on Monday.

## CLASS MEETINGS

During Ntl, you can join a Google Meet with Mrs. Smith EACH DAY from 12:30 - 1:00. This time will be used for specific questions and an occasional live class. The Google Meet link will always be found in the Google Classroom banner.



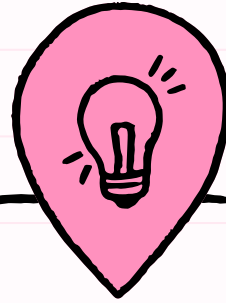


### **RESOURCES**

Khan Academy  
Purple Math  
Sophia.org

Math ESS

Ask Mrs. Smith



### **GOOD MATHEMATICS**

Is not about how  
many answers you  
know; it is how you  
behave when you  
don't know.



## A NOTE FROM MRS. SMITH

I am looking forward to having each of you this year. Hopefully sooner rather than later we will be learning in person and we can get to know one another. Until then we will work together and learn so much about math! I am here to teach you and help you grow. I will do my best and the rest is up to you!

I hope that you are well and that you are excited to start this year (even if it isn't how we planned)! It will be great!

